



# WHERE DO MY EDDS GO?

Assuring Quality Data for Analysis and Reporting

LINDA BLAKE, PMP  
IT PROJECT MANAGER  
307/745-7474  
LBLAKE@TRIHYDRO.COM



# EARLY DAYS OF DATA MANAGEMENT

## HAND CHISELING OF DATA

Word processing programs  
Desktop relational databases



# ADVENT OF ELECTRONIC DATA DELIVERABLES (EDDS)



Fast data entry

Necessitation of database schema rules

New workflow processes required to assure quality of data

# CHALLENGES

## MANUAL WORKFLOW PROCESS

Complex

Time consuming

Inconsistent

## CHANGING CONDITIONS

## DATABASE EXPERTISE REQUIRED

## PROCESSES NOT SCALABLE



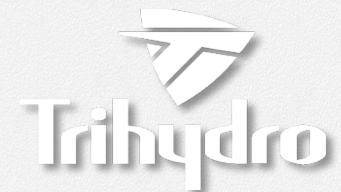
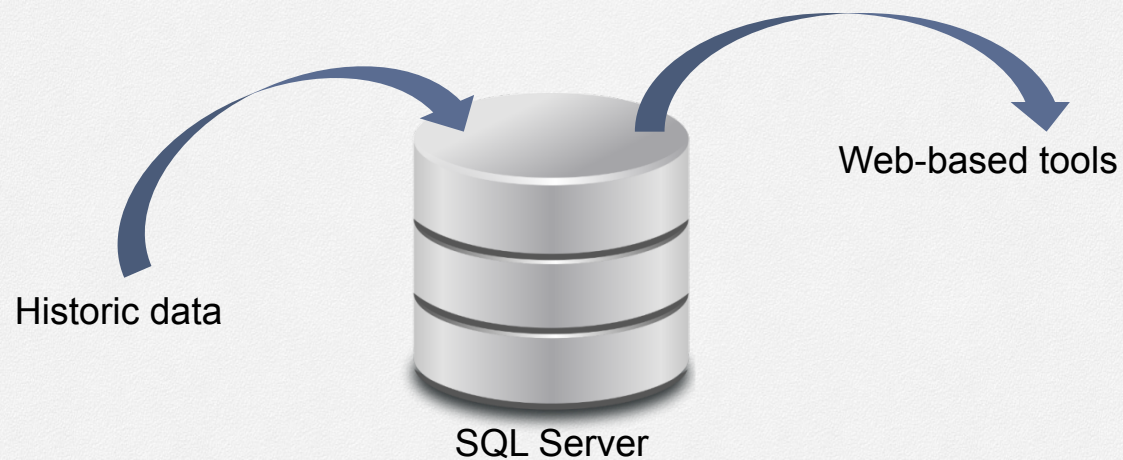
# OUR SOLUTION

## SQL SERVER AND WEB-BASED DATA MANAGEMENT – PROJECT DIRECT®

Historic data migrations

Single SQL Server schema for all projects

Web-based tools



# WEB-BASED LABORATORY DATA MANAGEMENT TOOLS

“THE TRACKER” ONE OF THE VERY FIRST TOOLS



## LAB REPORT

Date received

## EDD

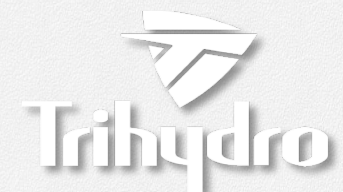
Date received

Date uploaded

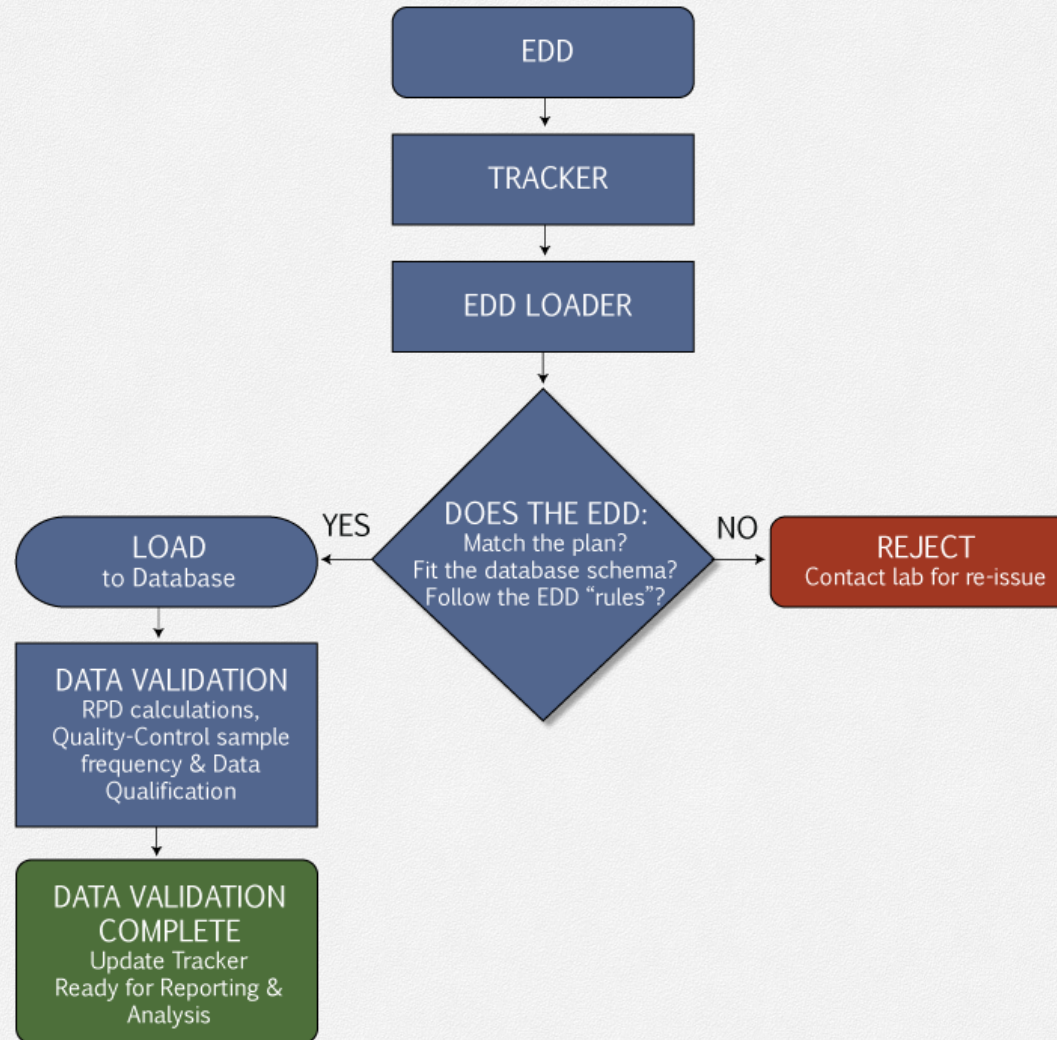
## DATA VALIDATION

Date initial review completed

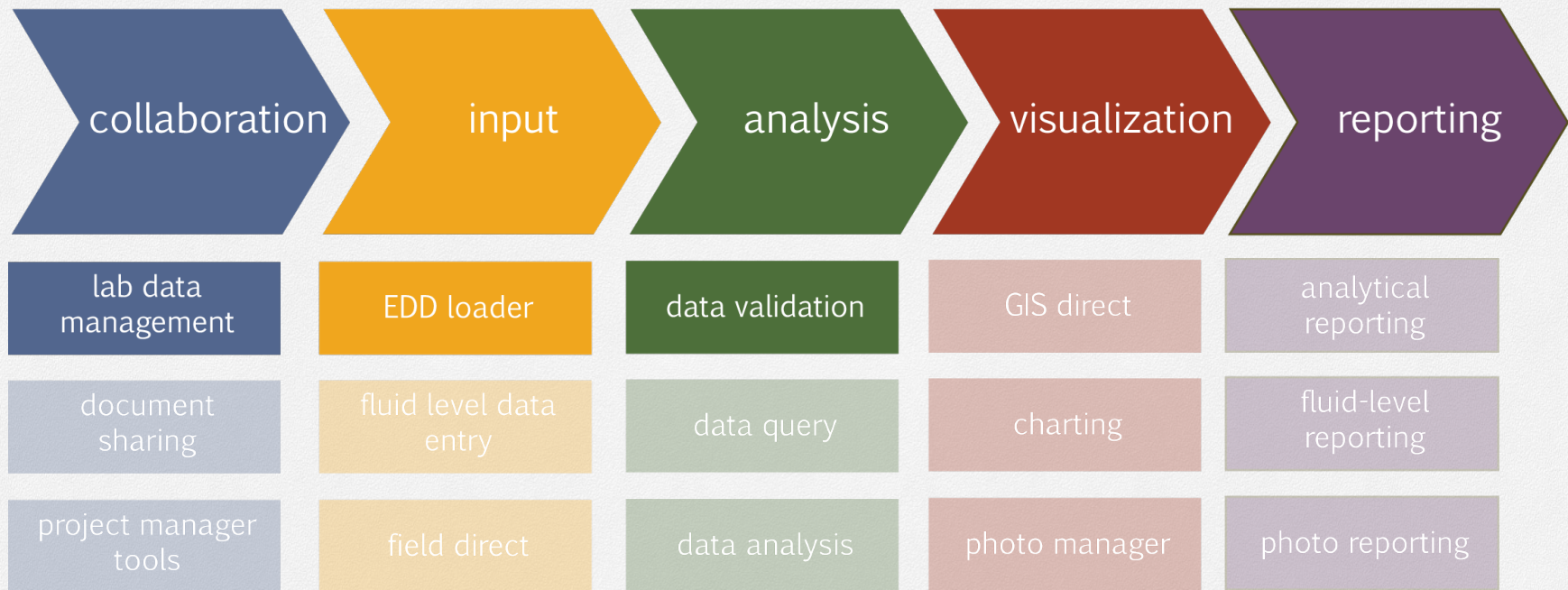
Date finalized



# EDD UPLOAD WORKFLOW



# DATA SHARING AMONG THE TOOLS



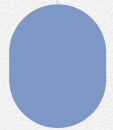




ADAPTABILITY



CONSISTENCY



SCALABILITY

“

It is not the strongest or the most intelligent who will survive but those who can best manage change.

.....  
- Charles Darwin

—  
Questions?

Thank you!



LINDA BLAKE, PMP  
IT PROJECT MANAGER  
307/745-7474  
LBLAKE@TRIHIDRO.COM

